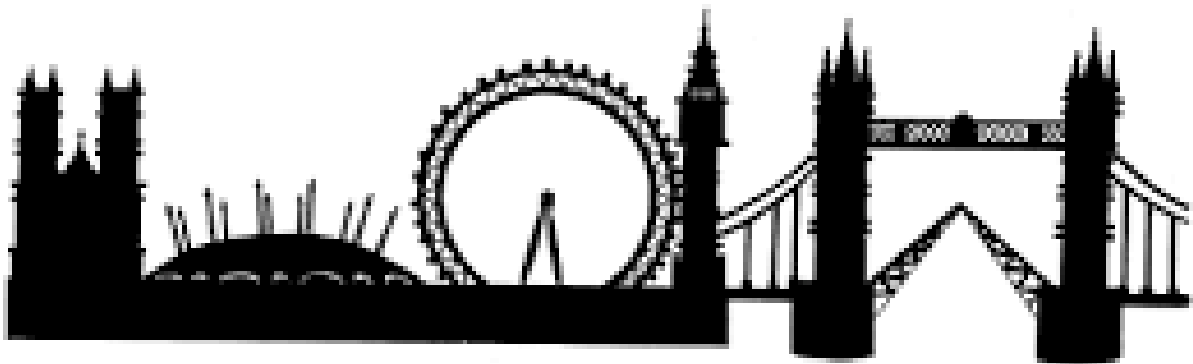


# London

## Residential 2022 Information Booklet



Fairlands Middle School

# LONDON

We are delighted to, once again, take the pupils of Fairlands to the nation's capital. In keeping with past trips, the main curriculum focus for the visit will be humanities. Where appropriate, there will be opportunities to explore other areas of the National Curriculum. London has a prolific number of museums, galleries and other resources to offer our pupils. A great deal of thought and effort has gone into constructing a programme of visits that will be of relevance to Year 8 pupils in line with the National Curriculum.

All of the children have a booklet to fill in during the week and this will need to be completed before we return.

Prizes will be awarded for effort and excellence.

## The Youth Hostel



As with previous trips, the school will be using the excellent facilities offered by the Youth Hostel Association as our base. London Central Youth Hostel is the perfect place to stay when exploring the Capital. The Youth Hostel is modern and secure with

key card access required for bedrooms and corridors. It is situated within a five minute walk of Oxford Street. Dorm rooms have multiple beds and pupils will be together in groups of either 4, 6 or 8.

## POCKET MONEY

Please ensure that all pocket money has already been paid to the office. It is unfair and creates problems if the pupils take any extra money. If your child would like to buy a programme at the musical theatre shows, please hand the money into school reception before we leave. The money should be in an envelope (the name of the pupil, amount of money enclosed and which theatre programme should be on the front of the envelope).



## MEDICAL ARRANGEMENTS



Any medication should be handed to Mr Murphy on the morning of departure. The name of the pupil, the correct dosage and instructions should be written clearly on any medication. It should then be placed in a **small** bag or sandwich box - again with the child's name clearly visible. If your child needs liquid paracetamol, please send sachets. Please feel free to discuss any particular concerns with Mr Murphy before the trip.

## TRAVEL

We will be travelling to our destination in London by coach. Whilst in London we will travel using the underground. The cost of daily travel by tube is included in the price paid for the trip. Please talk to your child about the importance of road and train safety and following instructions at all times.



# Kit List

Your child will need the following items:

**Very comfortable** walking shoes or trainers

Lightweight **waterproof** coat

Warm jumper

Shirts or T-shirts

Trousers or skirts

Socks or tights

Underwear

**Wallet**

**Towels** (hand/ bath)

Toiletries

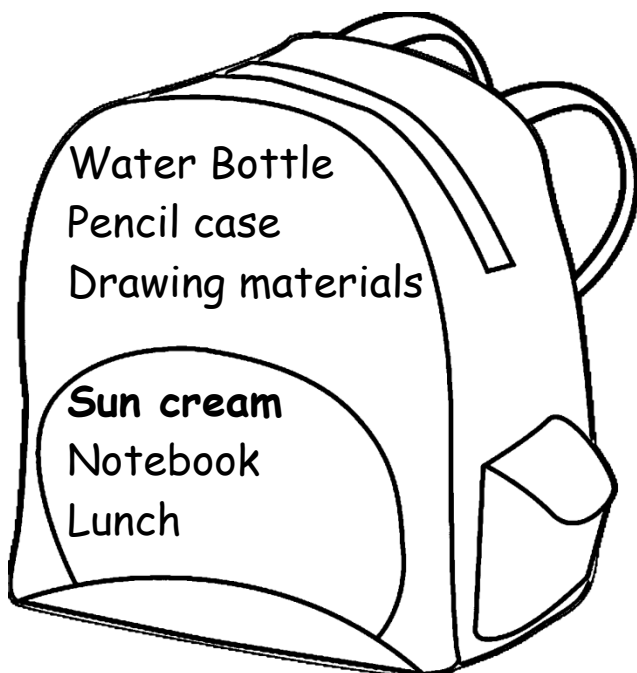
Night clothes

Evening clothes

Large plastic bag

## \*\*\* **USEFUL TIP** \*\*\*

Put a kit list on the inside of your child's bag so that the contents can be checked at the end of the visit.



Would parents please ensure that all kit is clearly marked with your **child's name** and **Fairlands School** where appropriate.

## LONDON FINAL REMINDERS:

A water bottle for drinks

Pencils/crayons and notebook

Large plastic bag for dirty clothing

Make sure **ALL KIT** is clearly marked

Make sure a kit list is inside your bag or case

**Do not lock your case/bag**

Do **not** bring any expensive items which may get lost or damaged - staff cannot be responsible for them.

No spray deodorants etc. due to the fire alarms.

### DON'T FORGET:

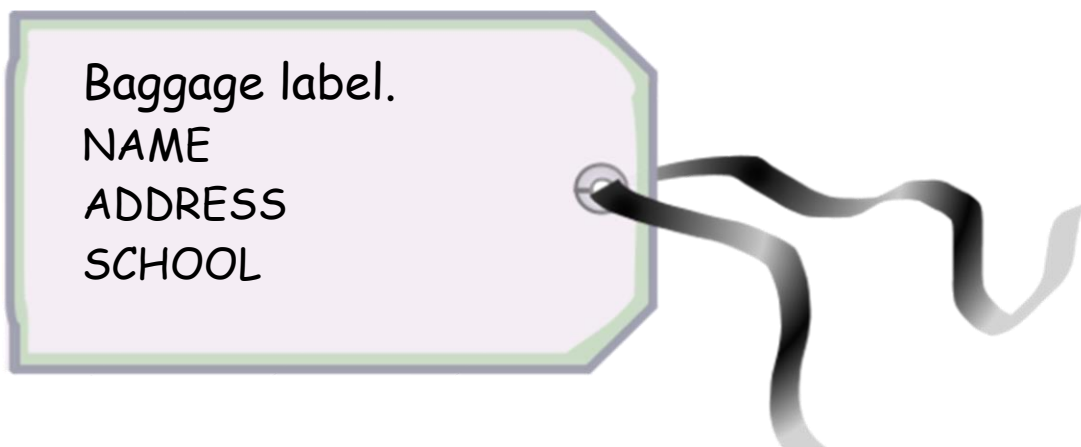
A packed lunch for the journey down - no glass bottles.

To take travel sickness medication if you need it.

No food or sweets on the coach.

A day bag and a water bottle.

**Please note:** The staff cannot take responsibility for the loss of any item.



## PLEASE DISCUSS WITH YOUR CHILD:

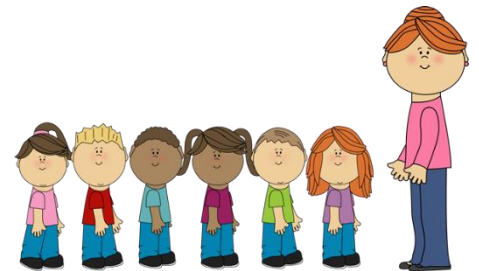
- Excellent behaviour is needed at all times; all instructions from any staff member must be followed immediately.
- Walking around London's busy streets and underground requires concentration, especially in the evenings and rush hours.
- Each pupil will know the emergency procedures and be given an emergency card.
- Expensive items are not to be taken on the trip.
- Mobile phones can be used as cameras, but not when travelling between places.
- Pupils must tell their group leader if they encounter any problems or have any worries whilst on the trip.
- No other electronic devices are allowed on the trip.

### \*\*\*\* MOBILE PHONES \*\*\*\*

Pupils can bring these for emergencies and may use them as a camera. Pupils will be expected to hand their phones to their group leader each evening. Responsibility of charging phones is that of the pupils. **We suggest they carry a power pack to help with this.** Phones will be confiscated if they are used inappropriately. Please ensure your child's phone and charger are clearly marked with their name, and are handed to a member of staff FULLY CHARGED and switched off on the morning of departure.

## BEHAVIOUR

Pocket money will be **withheld** for that day as a consequence for breaking the rules and will be returned with a letter to parents after our return from London. Pupils may be told that



they are changing groups or rooms if there are any further problems. **In the event of extreme misbehaviour or continual breaking of the rules, you will be asked to collect your son/daughter from London.**

# Timetable

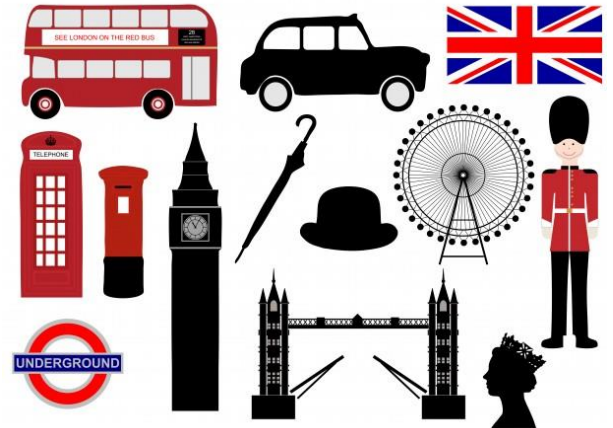
	<b>AM</b>	<b>PM</b>	<b>EVENING</b>
<b><u>MON</u></b>	6.30 am Arrive at school 7am Depart from Fairlands and travel to London.	Lunch  Green Park - Westminster Walk	Group B - Bowling inc. Meal at venue  Group A - London Eye inc. meal out
<b><u>TUES</u></b>	Breakfast  National Gallery	Lunch  British Museum	Dinner  Theatre - Wicked
<b><u>WED</u></b>	Breakfast  Zoo	Lunch  Zoo	Dinner  Theatre - Life of Pi
<b><u>THUR</u></b>	Breakfast  Tower of London	Lunch  Tower of London	Group A - Bowling inc. Meal at venue  Group B - London Eye inc. meal out
<b><u>FRI</u></b>	Breakfast Pack bags  Thames boat trip	Return home (Services food) 2pm	Arrive at Fairlands TBC. Please check the school website for details of the coach tracker.



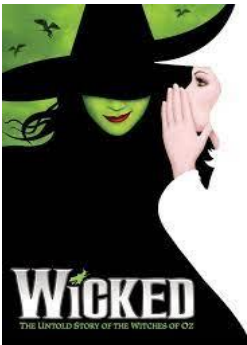
# ITINERARY INFORMATION

## Walking Tour of London

We believe that one of the best ways to explore Central London is on foot. It allows pupils to get closer to London's incredible history. We will be stepping right into the heart of one of the world's most exciting cities visiting famous landmarks such as Westminster Abbey, Big Ben, Trafalgar Square, Downing Street and Buckingham Palace.



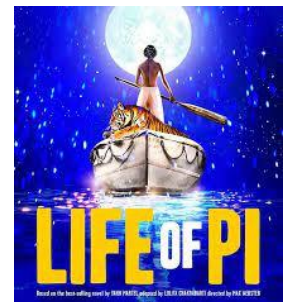
## Wicked



WICKED imagines an ingenious backstory of 'The Wonderful Wizard of Oz', revealing the decisions and events that shape the destinies of two unlikely University friends on their journey to becoming The Good and the Wicked Witch of the West.

## Life of Pi

After a cargo ship sinks in the middle of the vast Pacific Ocean, a sixteen year old boy named Pi is stranded on a lifeboat with four other survivors, a hyena, a zebra, an orangutan and a Royal Bengal tiger. Time is against them, nature is harsh, who will survive?





## National Gallery



The National Gallery London, is home to the greatest public collections of paintings in the world and tells the story of European art masterpiece by masterpiece.

## British Museum

The British Museum is a public museum dedicated to human history, art and culture.

The permanent collection of eight million works is among the largest and most

comprehensive in existence. The museum documents the story of human culture from its beginning to the present, and was the first public national museum in the world.



## Tower of London



This is an opportunity to explore London's iconic castle and world Heritage Site. You will be able to get up close to the crown jewels, meet the legendary Yeoman Warders and ravens. You will have the opportunity to see the Tower's moat develop into a sea of flowers in celebration of HM The Queen's Platinum Jubilee year.

## London Zoo

London Zoo or London Zoological Gardens is the world's oldest scientific zoo. It houses a collection of 673 species of animal with 19,289 individuals making it one of the largest collections in the UK.



## London Eye



The London Eye is the tallest Ferris Wheel in Europe. It is situated on the South Bank of the River Thames and offers magnificent views of the capital. It has become one of London's major landmarks and tourist attraction.

## River Thames Boat Trip

An exciting and relaxing way for us to see the sights and sounds of London from a different vantage point before we make our way home.





## **Staff**

Mr Murphy (Trip Leader)

Mrs Mazi Thomas

Miss Dunning

Miss Smith

Miss Richardson

Miss Nixon

Mrs Chew

Mrs Persaud

Mr Webster

Mr Boyd

Please let us know of anything that will help us to make your child's adventure a happy one.